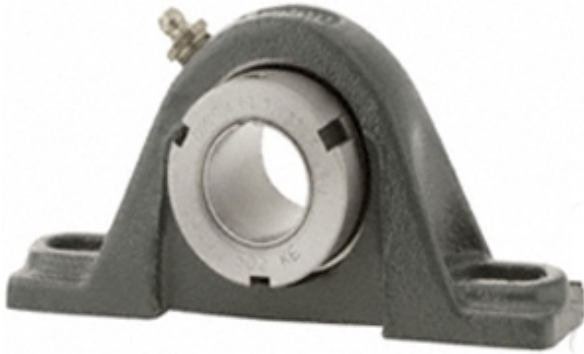




# Aurora BEARING LTD

1.25 Inch | 31.75 Millimeter x 1.625 Inch | 41.275 Millimeter x 1.813 Inch | 46.05 Millimeter Dodge P2B-GTB-104 Pillow Block Ball Bearing Units



Bearing No. P2B-GTB-104

P2B-GTB-104 Bearing 2D drawings and 3D CAD models

Category	Pillow Block Bearings
Inventory	0.0
Manufacturer Name	ABB MOTORS AND MECHANICAL INC
Minimum Buy Quantity	N/A
Weight	1.574
EAN	0782475881383
Product Group	M06110
Number of Mounting Holes	2
Mounting Method	Tapered Adapter Sleeve
Housing Style	2 Bolt Pillow Block
Rolling Element	Ball Bearing
Housing Material	Cast Iron
Expansion / Non-expansion	Non-expansion
Mounting Bolts	1/2 Inch
Relubricatable	Yes
Insert Part Number	INS-GT-104
Seals	Single Lip Contact
Housing Configuration	1 Piece Solid
Inch - Metric	Inch
Other Features	Single Row   Normal Duty   Low Base   Wide Inner Race   Thin Wall
Long Description	2 Bolt Pillow Block; 1-1/4" Bore; 1-13/16" Base to Center Height; Tapered



## Aurora BEARING LTD

	Adapter Sleeve Mount; Ball Bearing; 4-11/16" Minimum Bolt Spacing; 5-7/16" Bolt Spacing Maximum; Relubrica
Category	Pillow Block
UNSPSC	31171511
Harmonized Tariff Code	8483.20.40.40
Noun	Bearing
Keyword String	Pillow Block
Manufacturer URL	<a href="http://www.dodge-pt.com">http://www.dodge-pt.com</a>
Manufacturer Item Number	P2B-GTB-104
Manufacturer Internal Number	129190
Weight / LBS	4.9
Bolt Spacing Minimum	4.688 Inch   119.075Millimeter
Actual Bolt Center to Center	0 Inch   0Millimeter
d	1.25 Inch   31.75 Millimeter
B	1.813 Inch   46.05 Millimeter
Nominal Bolt Center to Center	5 Inch   127 Millimeter
D	1.625 Inch   41.275 Millimeter
Bolt Spacing Maximum	5.438 Inch   138.125Millimeter