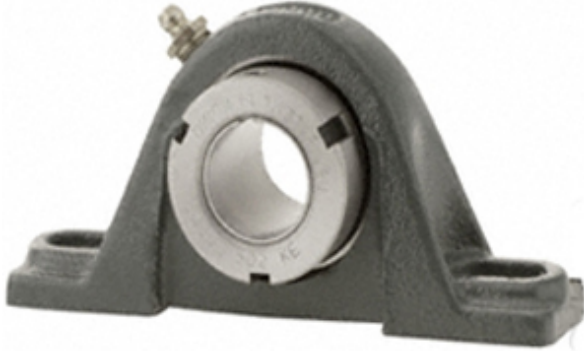




# Aurora BEARING LTD

0.938 Inch | 23.825 Millimeter x 1.453 Inch | 36.9 Millimeter x 1.313 Inch | 33.35 Millimeter Dodge P2B-GTB-015 Pillow Block Ball Bearing Units



Bearing No. P2B-GTB-015

P2B-GTB-015 Bearing 2D drawings and 3D CAD models

Category	Pillow Block Bearings
Inventory	0.0
Manufacturer Name	ABB MOTORS AND MECHANICAL INC
Minimum Buy Quantity	N/A
Weight	0.803
EAN	0782475881253
Product Group	M06110
Number of Mounting Holes	2
Mounting Method	Tapered Adapter Sleeve
Housing Style	2 Bolt Pillow Block
Rolling Element	Ball Bearing
Housing Material	Cast Iron
Expansion / Non-expansion	Non-expansion
Mounting Bolts	3/8 Inch
Relubricatable	Yes
Insert Part Number	INS-GT-015
Seals	Single Lip Contact
Housing Configuration	1 Piece Solid
Inch - Metric	Inch
Other Features	Single Row   Normal Duty   Low Base   Wide Inner Race   Thin Wall
Long Description	2 Bolt Pillow Block; 15/16" Bore; 1-5/16" Base to Center Height; Tapered Adapter



## Aurora BEARING LTD

	Sleeve Mount; Ball Bearing; 3-11/16" Minimum Bolt Spacing; 4-1/2" Bolt Spacing Maximum; Relubricata
Category	Pillow Block
UNSPSC	31171511
Harmonized Tariff Code	8483.20.40.40
Noun	Bearing
Keyword String	Pillow Block
Manufacturer URL	<a href="http://www.dodge-pt.com">http://www.dodge-pt.com</a>
Manufacturer Item Number	P2B-GTB-015
Weight / LBS	2.3
B	1.313 Inch   33.35 Millimeter
Bolt Spacing Maximum	4.5 Inch   114.3Millimeter
Nominal Bolt Center to Center	4.1 Inch   105 Millimeter
d	0.938 Inch   23.825 Millimeter
Bolt Spacing Minimum	3.688 Inch   93.675Millimeter
Actual Bolt Center to Center	0 Inch   0Millimeter
D	1.453 Inch   36.9 Millimeter