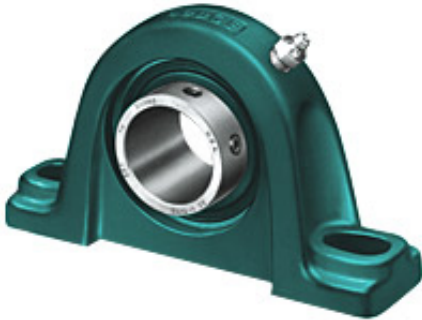




Aurora BEARING LTD



1.5000 in x 5-1/2 to 6.19 in x 1-15/16 in Dodge
P2BSCM108 Pillow Block Ball Bearing Units

Bearing No. P2BSCM108

P2BSCM108 Bearing 2D drawings and 3D CAD models

mounting:	Two-Bolt Base
finish/coating:	Black Oxide
d	1.5000 in
B	1-15/16 in
bore type:	Round
radial dynamic load capacity:	7891 lb
base to bore centerline:	2.1250 in
radial static load capacity:	4906 lb
duty type:	Medium Duty
base width:	2 in
housing material:	Cast Iron
D	5-1/2 to 6.19 in
locking device:	Set Screw
lubrication type:	Lubrication Fitting
seal type:	Contact/Lip
series:	209
expansion type:	Non-Expansion Bearing (Fixed)
manufacturer catalog number:	126811
overall length:	7.4400 in
standards met:	UL, AFBMA, AGMA, ASMMA, BSA, CMA, MPTA, PTDA, ISO 9002 Certified
overall height:	4.2800 in



Aurora BEARING LTD